

SWEDEN



Population: 9 571 105 • Income group: High • Gross national income per capita: US\$ 61 760

INSTITUTIONAL FRAMEWORK	
Lead agency	Swedish Transport Agency and Swedish Transport Administration
Funded in national budget	Yes
National road safety strategy	Yes
Funding to implement strategy	Partially funded
Fatality reduction target	50% (2007–2020)

SAFER ROADS AND MOBILITY	
Formal audits required for new road construction projects	Yes
Regular inspections of existing road infrastructure	Yes
Policies to promote walking or cycling	Yes
Policies to encourage investment in public transport	Yes
Policies to separate road users and protect VRUs	Yes

SAFER VEHICLES	
Total registered vehicles for 2013	5 755 952
Cars and 4-wheeled light vehicles	4 981 525
Motorized 2- and 3-wheelers	358 145
Heavy trucks	79 130
Buses	13 986
Other	323 166
Vehicle standards applied ^a	
Frontal impact standard	Yes
Electronic stability control	Yes
Pedestrian protection	Yes

^a UNECE WP29.

POST-CRASH CARE	
Emergency room injury surveillance system	Yes
Emergency access telephone numbers	112
Permanently disabled due to road traffic crash	10.0% ^b

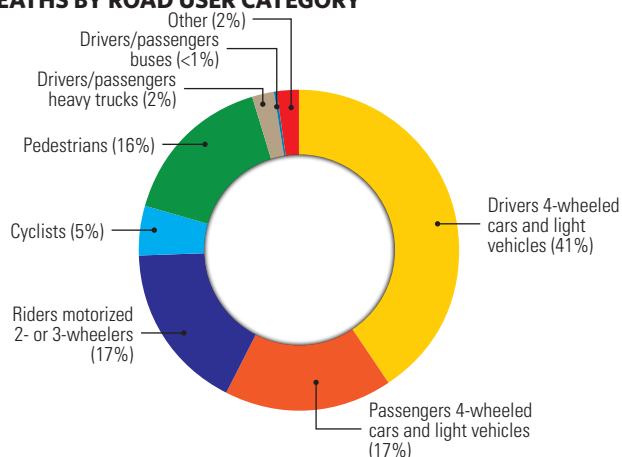
^b 2013, STRADA hospital data, Swedish Transport Agency.

DATA	
Reported road traffic fatalities (2013)	260 ^c (75% M, 25% F)
WHO estimated road traffic fatalities	272
WHO estimated rate per 100 000 population	2.8
Estimated GDP lost due to road traffic crashes	< 1.0% ^d

^c Transport Analysis. Defined as died within 30 days of crash.

^d 2010, International Traffic Safety Data and Analysis Group (IRTAD) Road Safety Annual Report 2011.

DEATHS BY ROAD USER CATEGORY



Source: 2013, Transport Analysis.

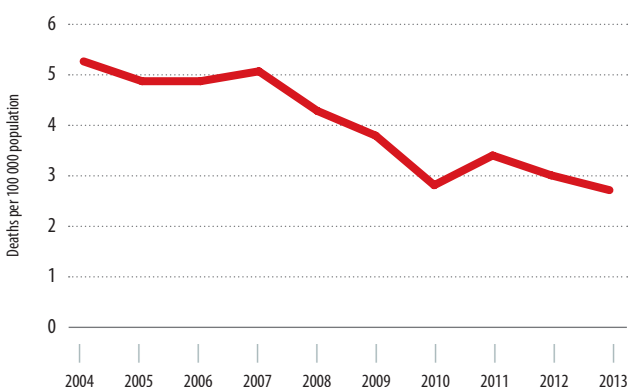
SAFER ROAD USERS	
National speed limit law	Yes
Max urban speed limit	50 km/h
Max rural speed limit	110 km/h
Max motorway speed limit	120 km/h
Local authorities can modify limits	Yes
Enforcement	0 1 2 3 4 5 6 7 8 9 10
National drink–driving law	Yes
BAC limit – general population	0.02 g/dl
BAC limit – young or novice drivers	0.02 g/dl
Random breath testing carried out	Yes
Enforcement	0 1 2 3 4 5 6 7 8 9 10
% road traffic deaths involving alcohol	19% ^e
National motorcycle helmet law	Yes
Applies to drivers and passengers	Yes
Law requires helmet to be fastened	Yes
Law refers to helmet standard	Yes
Enforcement	0 1 2 3 4 5 6 7 8 9 10
Helmet wearing rate	90–97% Drivers ^f , 90–97% Passengers ^f
National seat-belt law	Yes
Applies to front and rear seat occupants	Yes
Enforcement	0 1 2 3 4 5 6 7 8 9 10
Seat-belt wearing rate	98% Front seats ^g , 84% Rear seats ^g
National child restraint law	Yes
Restrictions on children sitting in front seat	No
Child restraint law based on	Age/Height
Enforcement	0 1 2 3 4 5 6 7 8 9 10
% children using child restraints	96% ^g
National law on mobile phone use while driving	Yes
Law prohibits hand-held mobile phone use	No
Law also applies to hands-free phones	No
National drug-driving law	Yes

^e 2013, Swedish Transport Administration.

^f 2003, The Swedish National Road and Transport Research Institute (VTI), Travel Survey (Resor i Sverige).

^g 2013, The Swedish National Road and Transport Research Institute (VTI), The use of seat belts in Sweden 2013.

TRENDS IN REPORTED ROAD TRAFFIC DEATHS



Source: Transport analysis.